



Queen Margaret University
EDINBURGH

Shaping a better world through education, research and innovation - enabling individuals and communities to flourish.

We are distinctive in our person-centred approach to education and teaching, and our commitment to shaping a better world. We treat our students as individuals and we aim to offer them the optimum balance of theoretical and practical learning. Renowned for immediately relevant research and innovation, we have widely recognised expertise in business, the creative industries, education, health and rehabilitation, and social sciences.

National Student Survey 2021

Top amongst UK universities for student satisfaction in **social sciences**



Occupational Therapy & Diagnostic Radiography

100% satisfaction

in the Top 2 in the UK for student satisfaction for **Adult Nursing**



Top amongst UK universities for student satisfaction in **Healthcare Science (Hearing Aid Audiology)**



in the Top 2 amongst UK universities for student satisfaction for **Complementary and Alternative Medicine (Podiatry)**



in the Top 15% of universities in the UK for student satisfaction relating to **teaching** on their courses

Top 3 amongst Scottish universities for **Learning Community**



in the Top 25% of universities in the UK for satisfaction with the **Student Voice**

Employment

At **3%**

QMU has the lowest level of unemployment in Scotland for its graduates 15 months after they have graduated

Graduate Outcome Statistics 2018/19, published by HESA in 2022

Age of students



37.7% are below 21 years

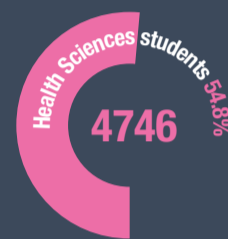
21.6% are 30 years and over

Student numbers

(2019-2020: including overseas collaborations)



5668
Total number of students



3387 QMU students are studying for a QMU degree through our overseas collaborations



QMU staff

(as of February 2021)

264 Academic



228 Professional Services



Female **66.5%**



Male **33.5%**



Rankings

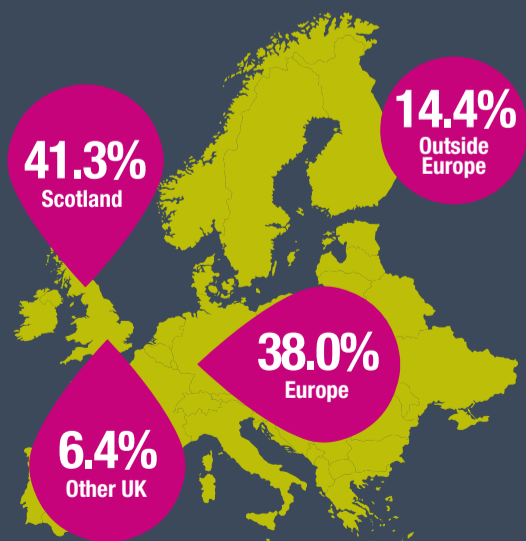
Within the **top 50%** of universities in the UK

and in the UK **top 20** for: Pharmacy and Pharmacology, Nursing, Hospitality, Leisure, Recreation and Tourism, Subjects Allied to Medicine, Communication and Media

in the Times and Sunday Times Good University Guide 2022

Student distribution by origin (2019-2020)

QMU students come from **over 90** countries



58

graduate start-ups created through our Business Innovation Zone



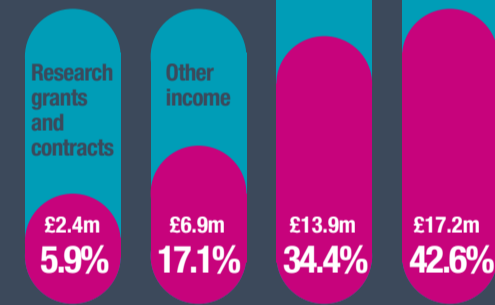
1st Scottish university to host a Business Gateway on campus

Income (2019-2020)

£40.4m



Sources of income (2019-2020)



Research excellence*

* REF 2014

92% of our research in **Speech and Language** is classed as internationally excellent or world leading



50%+ of our research profile in **Global Health and Development** is classed as internationally excellent or world leading



77%+ of our research publications in **Media and Communications** are classed as internationally excellent or world leading



40%+ of our research publications in **Allied Health** are classed as internationally excellent or world leading



6 research centres and **3** knowledge exchange centres



Fostering innovation

£40m City Region Deal funding unlocked for **Edinburgh Innovation Park** beside QMU campus

